

Isolation & Quarantine FAQs

Isolation: Separating someone infected with the virus from people who are not infected.

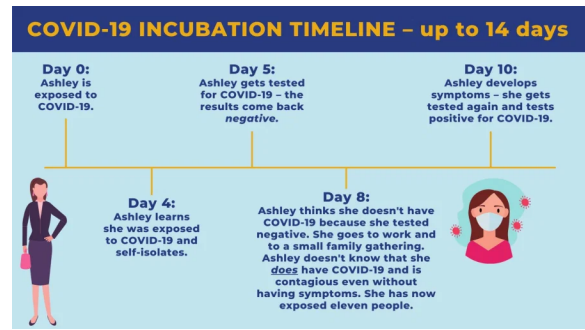
Quarantine: Keeping someone who might have been exposed to Covid-19 away from others.

Close Contact: Someone who was within 6 feet of an infected person for more than 15 CUMULATIVE minutes, regardless of wearing face covering.

Last Exposure: Last date an individual was in close contact to a person who tested positive for Covid-19.

*The quarantine period is **14 days** for close contacts of Covid-19 cases.

*The exposed individual does not have to be quarantined if they have proof they are fully vaccinated or had a positive PCR test within 5 months of exposure.



**Until further guidance is provided by MDHHS, testing to reduce quarantine to 7 days is not authorized by the Wayne County Public Health Division.

My student was in close contact with an individual who tested positive for Covid-19. Do my other children or myself have to quarantine?

No. Only the individual that was a close contact has to quarantine UNLESS the quarantined individual tests positive for Covid-19 or symptoms develop.

I tested positive for Covid-19 and was unable to isolate from my child because I have to care for them. When can my child return to school?

14 days after the date your isolation ends. 24 days in total for your child.

If the child develops symptoms or tests positive for Covid-19, 10 days of isolation would start and the child may return sooner than the 24 day period.

My student tested positive for Covid-19. When can they return to school?

10 days after the test date, as long as symptoms are improving and the individual has been fever free for 24 hours without the use of fever-reducing medication.